

TS-RD-ANNUNCIATOR



Remote Display Annunciator

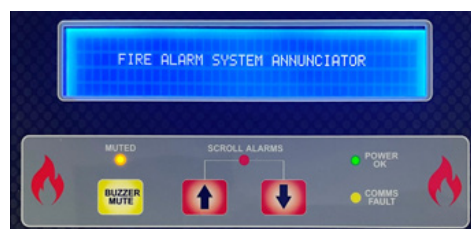
An 8 x 2 LCD display is provided to give visual indications of the overall system status and details of any faults.

This unit comprises a display, 4 lines by 40 characters, 3 operator buttons and internal configuration switches.

The status of each of the Remote Displays is cycled through at one second intervals.

The first line shows the address of the Remote Display

The second line shows that display's status.



Product Overview

In any environment, there is a need to reliably inform occupants of any impending danger, so that they may make an informed decisions on the continued safety of themselves and those with whom their care has been entrusted, and any other personnel in the area.

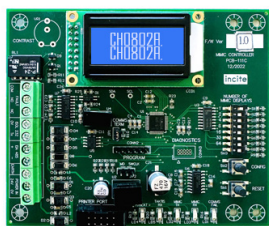
The TS Remote Display Annunciator performs this function.

The system comprises of a main control board, and up to 31 remote displays.

The main control board receives status messages from a Taktis panel, and distributes the alarm messages to the remote displays.

Specifications:

Parameter	Description
Construction	1.2mm mild sheet steel
IP Rating	IP30
Finish	Epoxy powder coated
Colour - lid & box	BS 00 A 05 grey - fine texture
Weight	2kg
Display	4-line x 40-character display
Size	234mm x 170mm x 51m
Operation Voltage Range	18 to 33V DC
Current consumption	Quiescent 45mA @ 24v Alarm 60mA @ 24v
Communication	RS485 @ 19200kbs



TS-RD-CONTROLLER

Main Control Board

Taktis Fire Panel Interface Module

**refer to TS-RD-CONTROLLER Data Sheet*